An architectural rendering of a courthouse design project. The image shows a close-up of a building's exterior corner. On the left, there is a wall made of dark brown bricks. Above this, a section of the wall is covered in light-colored, square tiles. To the right, a section of the wall is made of light green corrugated metal. The background is a light gray with a large, light brown geometric shape that resembles a stylized building or roofline. The title 'COURTHOUSE DESIGN PROJECT' is written in large, bold, dark brown capital letters in the upper right corner. Below the title is a thin horizontal line. Below the line, the names 'Annabelle Arthur' and 'Jermica Jackson' are written in a smaller, dark gray font. In the bottom right corner, the text 'PROPOSAL - CIVIL COURT' is written in a dark gray font.

COURTHOUSE DESIGN PROJECT

Annabelle Arthur
Jermica Jackson

PROPOSAL - CIVIL COURT

PROPOSAL

For this project, we propose the construction of a Civil Court. The structure will be a “C” shaped building with a fusion of modern and traditional romanesque architecture. We plan to keep the existing exterior walls wrapped around the existing building, to preserve historical landmark. We wanted to add comfortability within the Courthouse through the tranquility of the courtyard. The courthouse is divided into three parts. One side is private (Left), the other is kept public (Right), and courtroom is in the center.

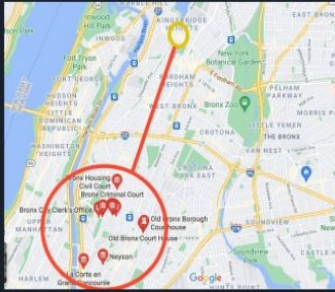
We also plan to incorporate :

- Provide lighting (Arched Roof)
- Addition of Glass, stone and Brick. (Exterior)
- Wood, Glass, concrete, marble (Interior)
- Arched windows and wooden doors.

SITE CHOSEN

- Location : Kingsbridge Armory, West Kingsbridge Road, Bronx, NY.
- Size : 5 acres
- The Kingsbridge Armory; also known as the Kingsbridge National Ice Center, has been vacant since 1996. The state is currently planning to make it an ice center, but the project has been on hold since 2013 due to funding issues.



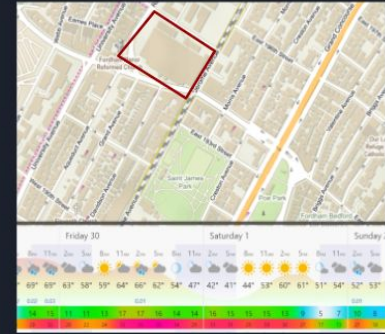


- Schools/Colleges/Daycare
- Grocery Stores
- Fast Food
- Park

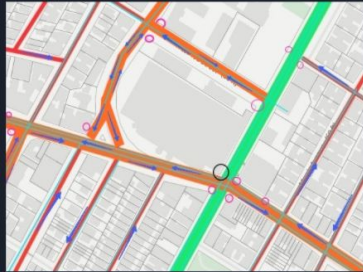
POINT OF INTEREST



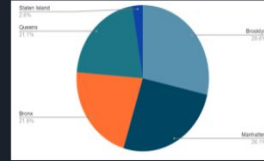
ZONING/LAND USE



WEATHER/PREVAING WINDS

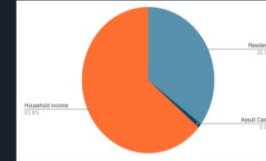


TRANSPORTATION/VEHICULAR CIRCULATION

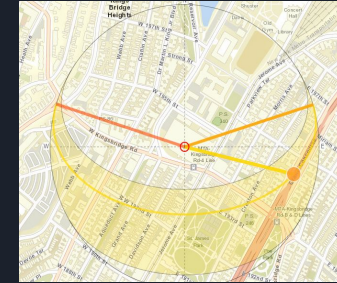


- Bronx: 20,027
- Brooklyn: 27,364
- Manhattan: 24,308
- Queens: 20,391
- Staten Island: 2,464

DEMOGRAPHICS

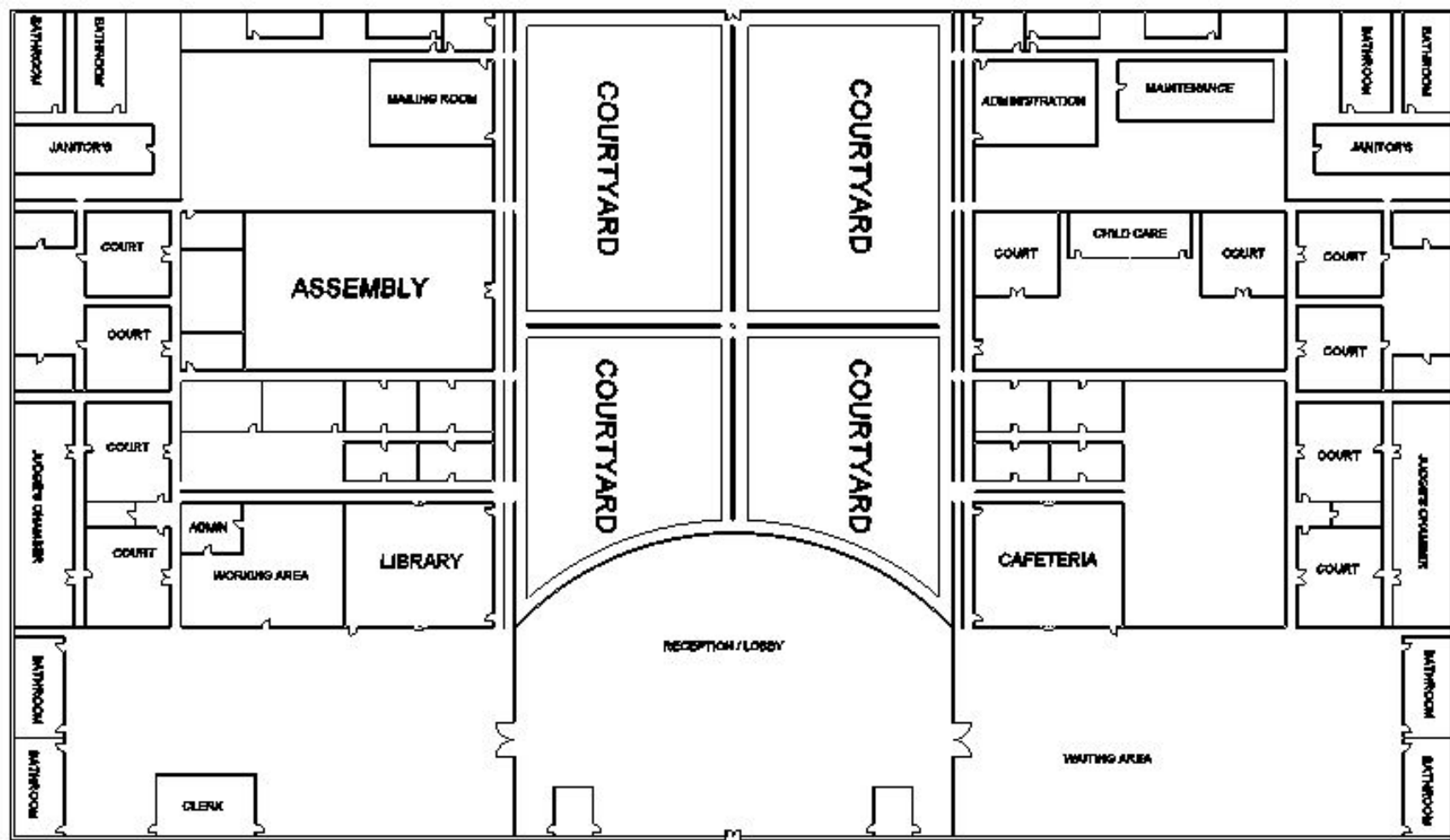


- Household income
- Residents
- Assault Cases



SUN COMPASS ORIENTATION

BRONX COURTROOM DESIGN - SITE ANALYSIS
Annabelle Arthur, Jermica Jackson

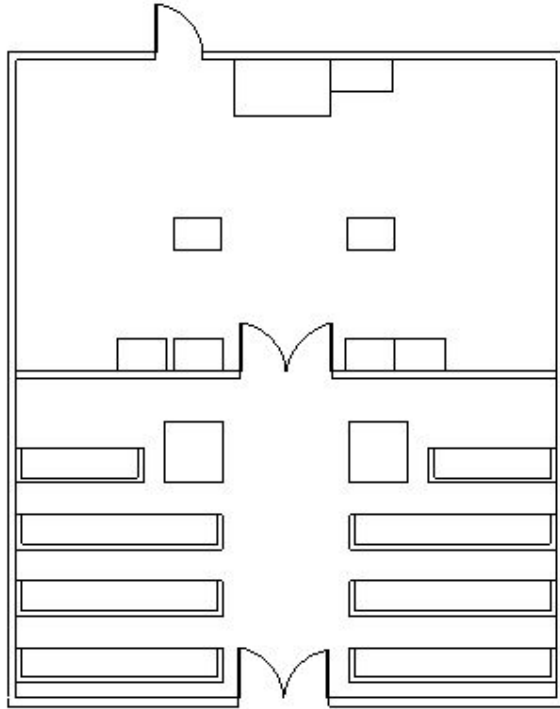


Floor Plan Not to Scale

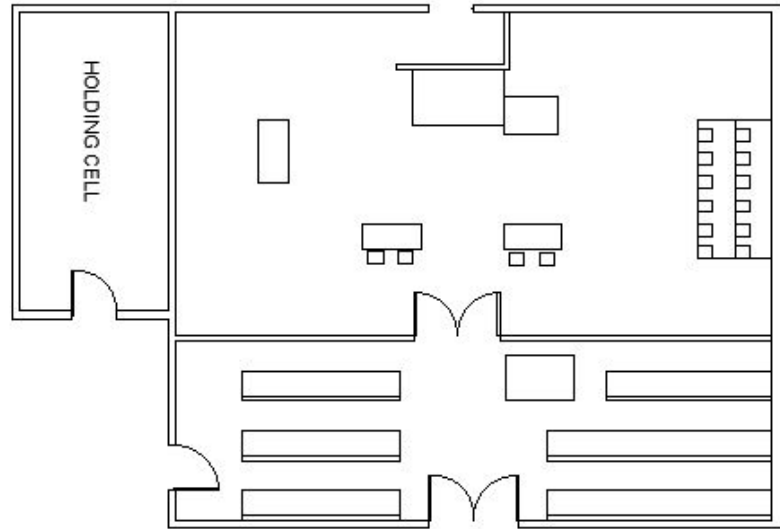
MOOD/VISION BOARD (INTERIOR)



Floor Plan (Courtroom)



General Courtroom



Criminal Courtroom

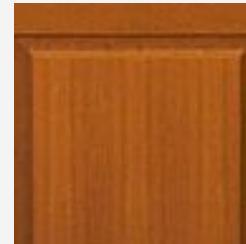
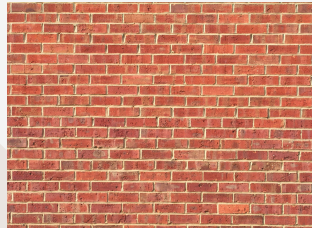
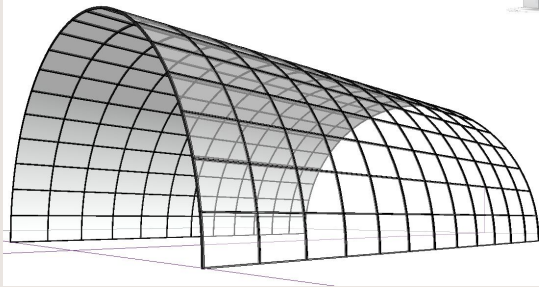
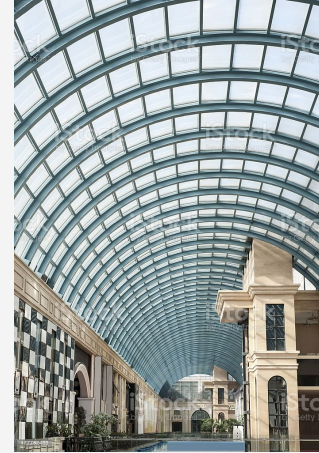
MOOD/VISION BOARD (EXTERIOR)



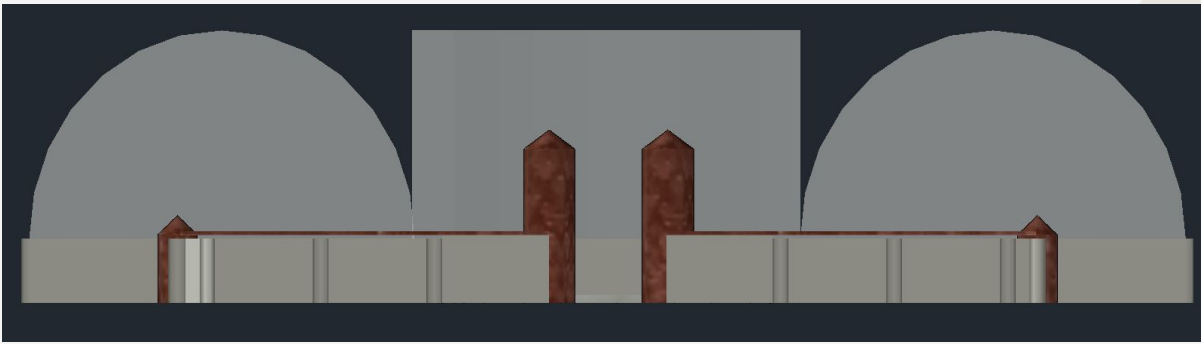
Bronx County Hall of Justice



Cloisters, The Met Museum



Exterior Elevations



Front View

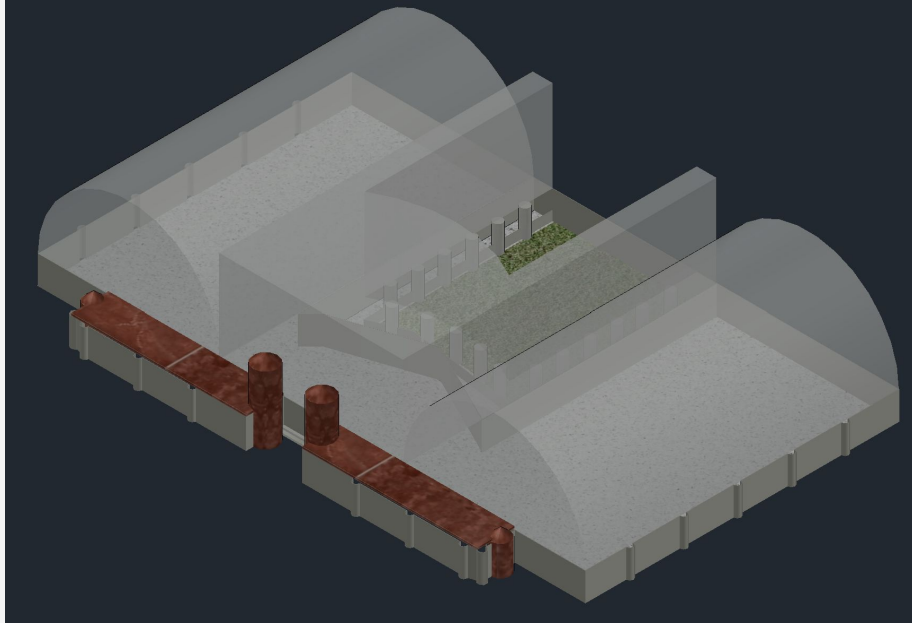


Back view

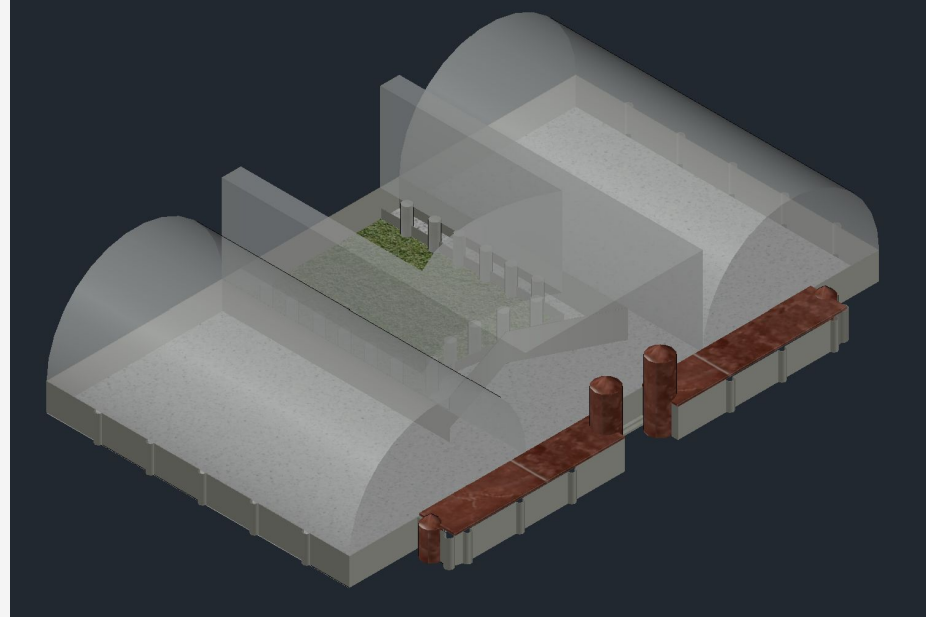
Side views (R&L)



Exterior Design



Exterior view (SE)



Exterior view (SW)

Landscape



Landscape (zoom out)



Landscape (zoom in)